



Producer: **Copeland**

Line: **ZF**

Model: **ZF41K5E-TFD**

Cooling capacity [kW]: **19.80**

Displacement [m<sup>3</sup>/h]: **35.3**

Refrigerant: **R404A, R407A, R407F, R448A, R449A**

Capacity control: **None**

Power supply: **400V/3Ph/50Hz**

## Data

### Technical data

Displacement	[m <sup>3</sup> /h]	35.3
Oil charge	[l]	3.37
Oil type		POE RL32-3MAF
Internal free volume	[dm <sup>3</sup> ]	13.3
Net weight	[kg]	63.10

### Electrical data and limits

Power supply		400V/3Ph/50Hz
Maximum continuous current	[A]	29.0
Locked rotor amperage	[A]	118.0
Motor resistance main	[Ω]	1.24
Maximum suction pressure	[bar]	22.6
Maximum discharge pressure	[bar]	32.0

### Dimensions

Suction connection thread diameter	[inch]	1 3/4
Discharge connection thread diameter	[inch]	1 1/4
Length	[mm]	280
Height	[mm]	534
Width	[mm]	280

### Other

Approved refrigerants	R404A, R407A, R407F, R448A, R449A
Allowed oil types	POE RL32-3MAF, POE MOBIL EAL Arctic 22 CC
Capacity control	None
Protection rating	IP54 (IEC34)

## Performance

Nominal conditions: refrigerant: R404A, evaporation: -10°C (dew point), condensation: 45°C (dew point), superheating: 10K, subcooling: 0°C

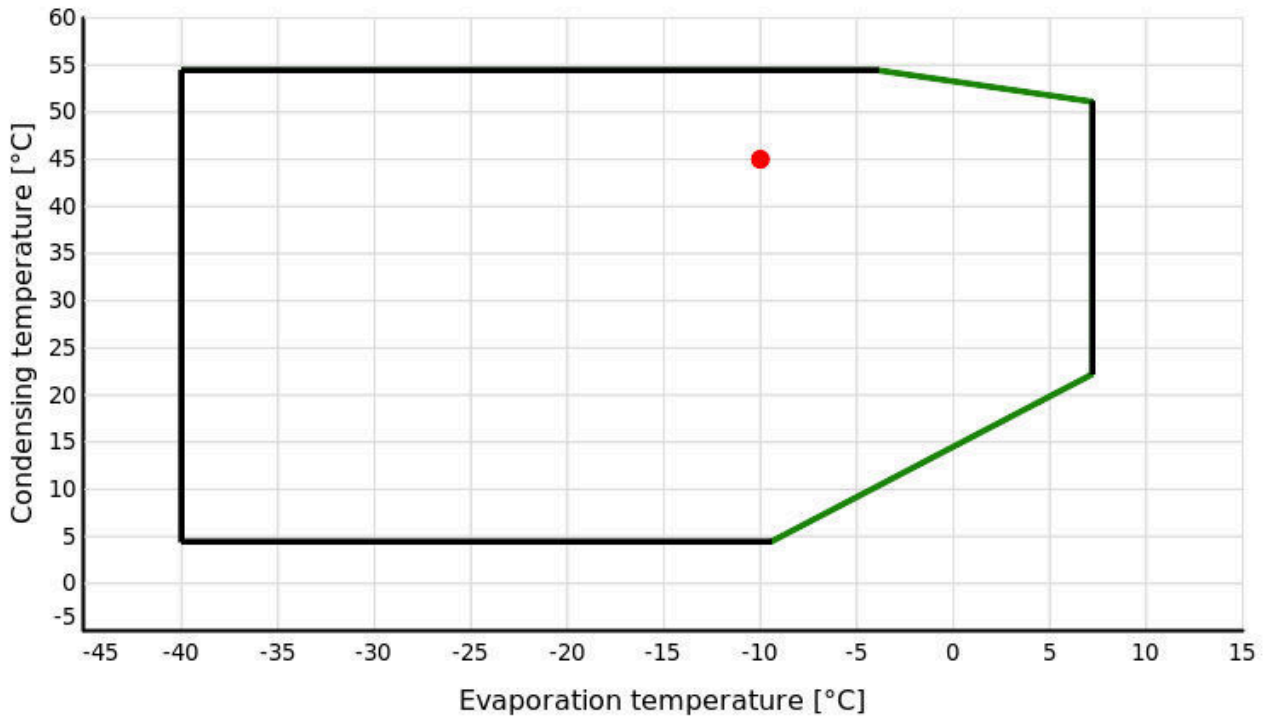
### Cooling capacity

		Evaporation temperature [°C]										
		-40	-35	-30	-25	-20	-15	-10	-5	0	5	7
Condensation temperature [°C]	4.4	9.04	11.42	14.42	18.11	22.54	27.81	33.98				
	5	8.99	11.37	14.35	18.02	22.43	27.67	33.81				
	10	8.55	10.85	13.71	17.20	21.41	26.40	32.26	39.06			
	15	8.10	10.30	13.03	16.35	20.34	25.09	30.66	37.13	44.56		
	20	7.63	9.73	12.32	15.46	19.23	23.72	29.00	35.14	42.22	50.28	
	25	7.14	9.13	11.57	14.53	18.07	22.30	27.27	33.08	39.80	47.47	50.82
	30	6.63	8.51	10.80	13.56	16.87	20.82	25.49	30.96	37.30	44.59	47.78
	35	6.10	7.86	9.99	12.55	15.62	19.30	23.65	28.77	34.74	41.62	44.65
	40	5.55	7.19	9.15	11.50	14.33	17.72	21.75	26.52	32.10	38.58	41.44
	45	4.99	6.49	8.27	10.41	12.99	16.09	<b>19.80</b>	24.20	29.39	35.45	38.14
	50	4.41	5.77	7.37	9.29	11.60	14.40	17.77	21.81	26.60	32.24	34.76
54.4	3.87	5.10	6.53	8.25	10.33	12.86	15.93	19.63				


### Power consumption

		Evaporation temperature [°C]										
		-40	-35	-30	-25	-20	-15	-10	-5	0	5	7
Condensation temperature [°C]	4.4	3.36	3.74	4.11	4.49	4.87	5.25	5.63				
	5	3.39	3.76	4.14	4.52	4.90	5.28	5.65				
	10	3.65	4.03	4.41	4.79	5.17	5.54	5.92	6.30			
	15	3.95	4.33	4.71	5.10	5.48	5.86	6.24	6.62	7.01		
	20	4.28	4.67	5.06	5.45	5.84	6.22	6.61	7.00	7.39	7.78	
	25	4.63	5.04	5.44	5.84	6.24	6.64	7.04	7.44	7.84	8.24	8.40
	30	5.03	5.44	5.86	6.27	6.69	7.11	7.52	7.94	8.35	8.77	8.93
	35	5.45	5.89	6.32	6.75	7.19	7.62	8.06	8.49	8.92	9.36	9.53
	40	5.91	6.37	6.82	7.28	7.74	8.19	8.65	9.10	9.56	10.01	10.20
	45	6.41	6.89	7.37	7.85	8.33	8.82	<b>9.30</b>	9.78	10.26	10.74	10.93
	50	6.94	7.45	7.96	8.47	8.98	9.49	10.00	10.51	11.02	11.53	11.74
54.4	7.45	7.99	8.53	9.06	9.60	10.14	10.68	11.22				

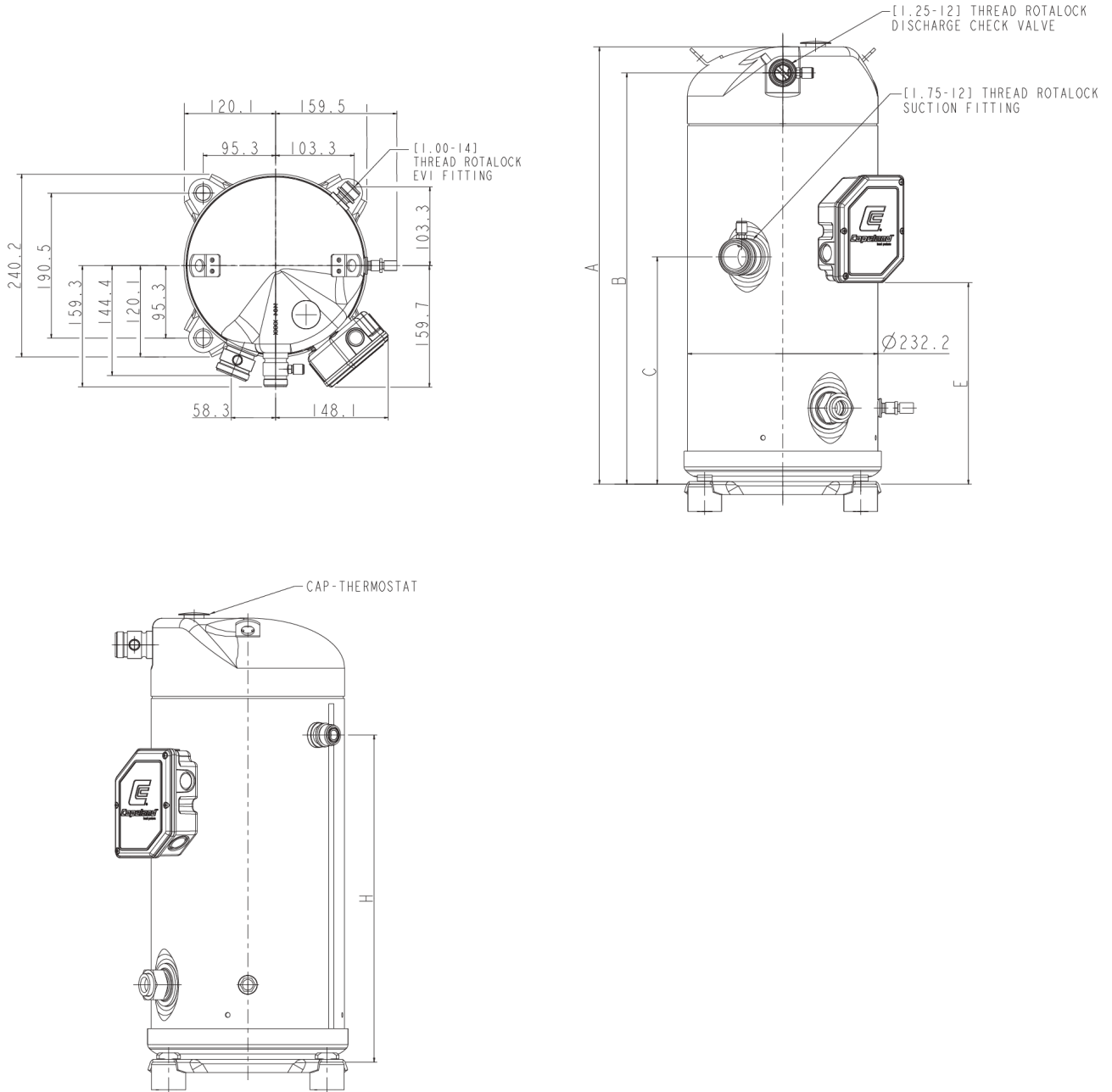
Application range



Legend

 Suction gas temperature: 20°C, liquid injection

**Dimensions**



**Dimensions**

Dimension A	[mm]	533,6
Dimension B	[mm]	501,8
Dimension C	[mm]	277,3
Dimension E	[mm]	245,7
Dimension F	[mm]	93
Dimension G	[mm]	93
Dimension H	[mm]	393,3